

## POP-UP TABLE

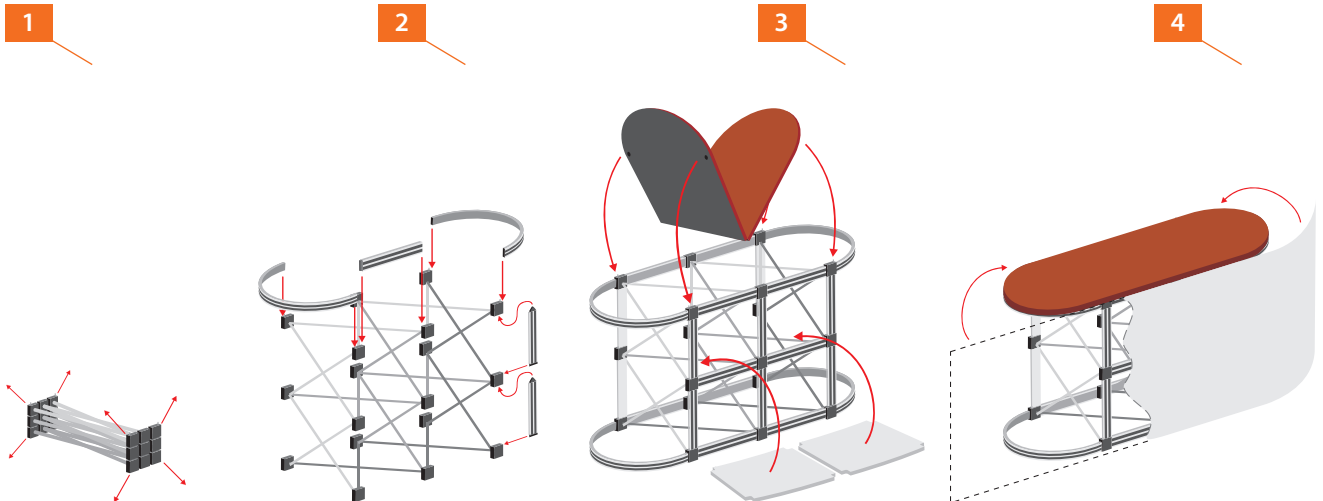
### Set-up Instruction



Portable promotional unit is suitable for presentations or demonstration stands. "Pop Up" table looks like a luxurious bar. There is a promotional image on the front of the table - it helps to attract potential customers.

#### Product Information

Graphic size ( mm )	870 x 2180
Packaged weight	< 9Kg,
Material	duralumin PVC



Remove pop up frame from carry bag. Erect structure ensuring table top locating studs are upper most.

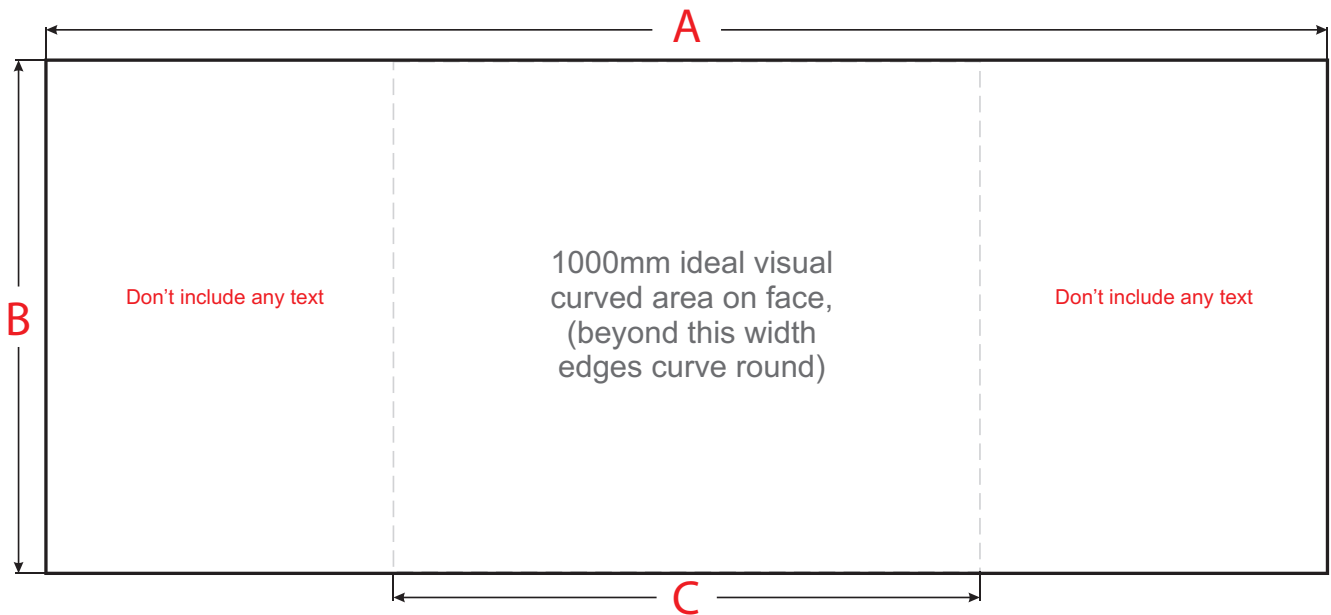
Affix horizontal magnetic rails (curved) at bottom of structure. Affix vertical magnetic rails (straight).

Insert the lower and middle shelves. Slightly angle the shelves to assist location.

Unroll the graphic and locate the magnetic buttons into the top of the structure, ensuring magnetic tape aligns to the vertical rails.

## Graphic Specification

These are guidelines for preparing ready printing files



### Artwork Guidelines

Actual banner size ( **A x B** ) **870 x 2180**

Visible graphic size ( **A x C** ) **870 x 1000**

### Artwork Requirements

Resolution **100-150 dpi**

Color mode **CMYK**

File format ( scale M 1:1 ) **.TIFF**

### Recommendations

Keep all important graphic elements (images, text, etc.) within the visible area.

Please allow space for trimming by not placing type or logos too close to the edge of the visible area.